

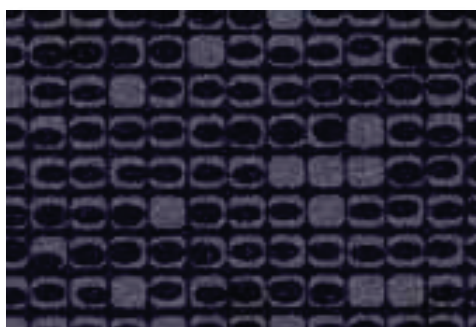
# PERFORATION

 2 m	19 dB	Protecsol®	Sanosol®	 100 % recyclable
--	-------	------------	----------	--



WR: 0585 2490

0620 Mango



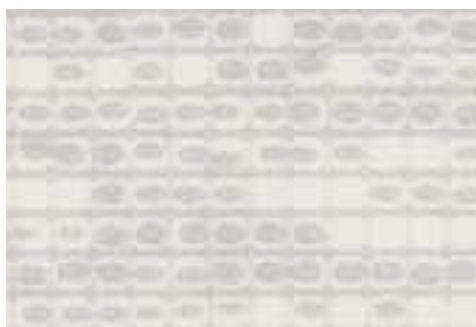
WR: 0585 2238

0615 Black



WR: 0585 2489

0619 Orange



WR: 0585 2438

0616 White



WR: 0585 2488

0622 Cherry



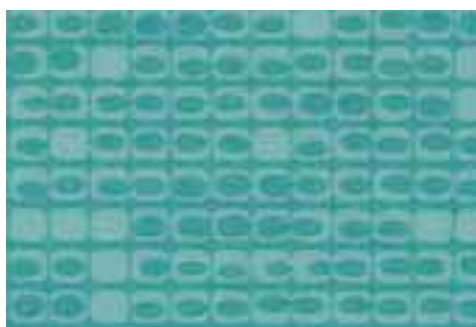
WR: 0585 2491

0617 Champagne



WR: 0585 2487

0621 Fuschia



WR: 0585 2492

0618 Lagoon

# JUTE



Jute - Natural

	19 dB	Protocolsol®	Sanosol®	 100 % recyclable
---	-------	--------------	----------	--



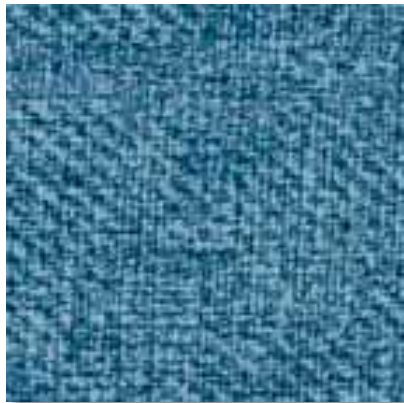
WR: 0585 2551

0623 Dove Grey



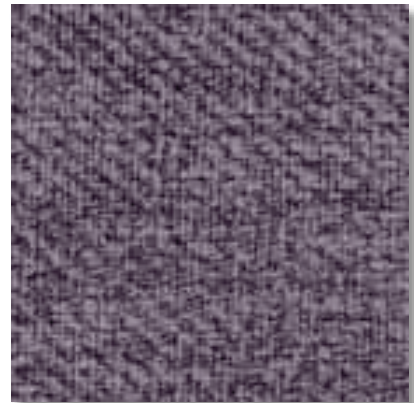
WR: 0585 2554

0626 Siena



WR: 0585 2550

0627 Denim



WR: 0585 2553

0628 Lilac



WR: 0585 2413

0624 Natural



WR: 0585 2413

0625 Light

# SMART LINE

 2 m	19 dB	Protecsot®	Sanosol®	 100 % recyclable
--	-------	------------	----------	--



WR: 0585 2494

0612 Mink



WR: 0585 2495

0613 Hazel



WR: 0585 2497

0610 Graphite



WR: 0585 2496

0611 Nordic Grey



WR: 0585 2493

0614 Evening Blue



Smart Line - Nordic Grey

# STRADA



 2 m	19 dB	 1 m	18 dB	Protecsol®	Sanosol®	 100 % recyclable
--	-------	--	-------	------------	----------	--



WR: 0585 2230

0464 Ardoise



WR: 0585 2211

0465 Ciment



WR: 0585 2113

0460 Cobalt



WR: 0585 0580

0466 Mastic



WR: 0585 2229

0469 Camel



WR: 0585 0318

0470 Chanvre

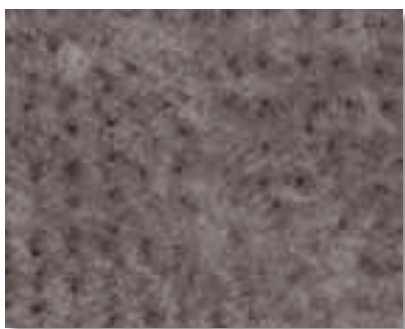


WR: 0585 2154

0463 Safran

# IMPACT

 2 m	19 dB	Protecsol®	Sanosol®	 100 % recyclable
--	-------	------------	----------	--



0444 Cendre

WR: 0585 2232



0451 Etain

WR: 0585 0645



0441 Souris

WR: 0585 0256



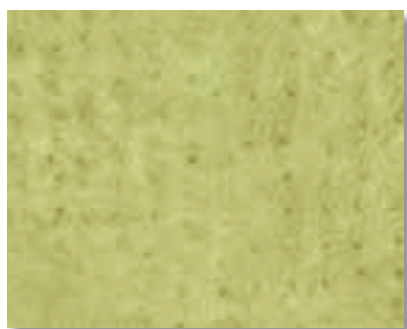
0452 Colza

WR: 0585 2231



0629 Infinite Blue

WR: 0585 2374



0631 Grass

WR: 0585 2499



0630 Botanic

WR: 0585 2498



# WOOD



Wood - Saturne Perou

# WOOD

Colour reference	Colour name	Pattern repeat in m	Planks sizes of the design in cm	
			Length	Width
0588	Noma Clair	1 x 1	100	16,6
0589	Noma Marron	1 x 1	100	16,6
0636	Esterel Blond	1 x 1	100	10
0637	Esterel Brown	1 x 1	100	10
0505	Walnut Naturel	1 x 1	100	5
0585	Saturne Perou	1 x 1	20-25-30	10

 2 m	19 dB	Protecsol®	Sanosol®	 100 % recyclable
---	-------	------------	----------	--



**Noma** 0588 Clair

WR: 0585 2484



**Noma** 0589 Marron

WR: 0585 2483



**Esterel** 0636 Blond

WR: 0585 2224



**Esterel** 0635 Brown

WR: 0585 2486



**Saturne** 0585 Perou

WR: 0585 2132



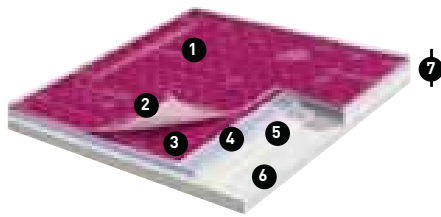
**Walnut** 0505 Naturel

WR: 0585 2485

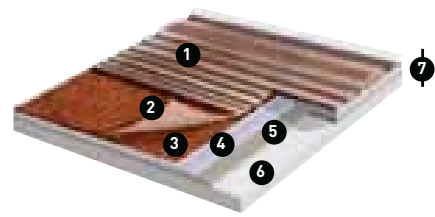
 Sheet with foam backing (Comfort) -  Planks in cm - WR: Welding Rods

# TARALAY INITIAL

## PRODUCT BENEFITS



- 1 Protocolsol® treatment
- 2 Transparent wearlayer
- 3 Printed design
- 4 Glass fibre grid
- 5 Compact layer
- 6 Foam backing
- 7 Sanosol® treatment



- 1 Ribbed nosing
- 2 Transparent wearlayer
- 3 Printed design
- 4 Glass fibre grid
- 5 Compact layer
- 6 Foam backing
- 7 Sanosol® treatment

### Acoustic properties



- Excellent sound insulation: 19 dB.
- Reduces impact noise in circulation areas by 8 to 10 times compared to solid flooring.

### Shock absorbent behaviour



- Provides cushioning underfoot.
- Provides additional safety in case of mishaps falls.
- Reduces body-fatigue.

### Extreme durability



- Best resistance to abrasion: twice as good as the best homogeneous of the market.

### Easy maintenance:

#### Protocolsol® surface treatment

Protocolsol®

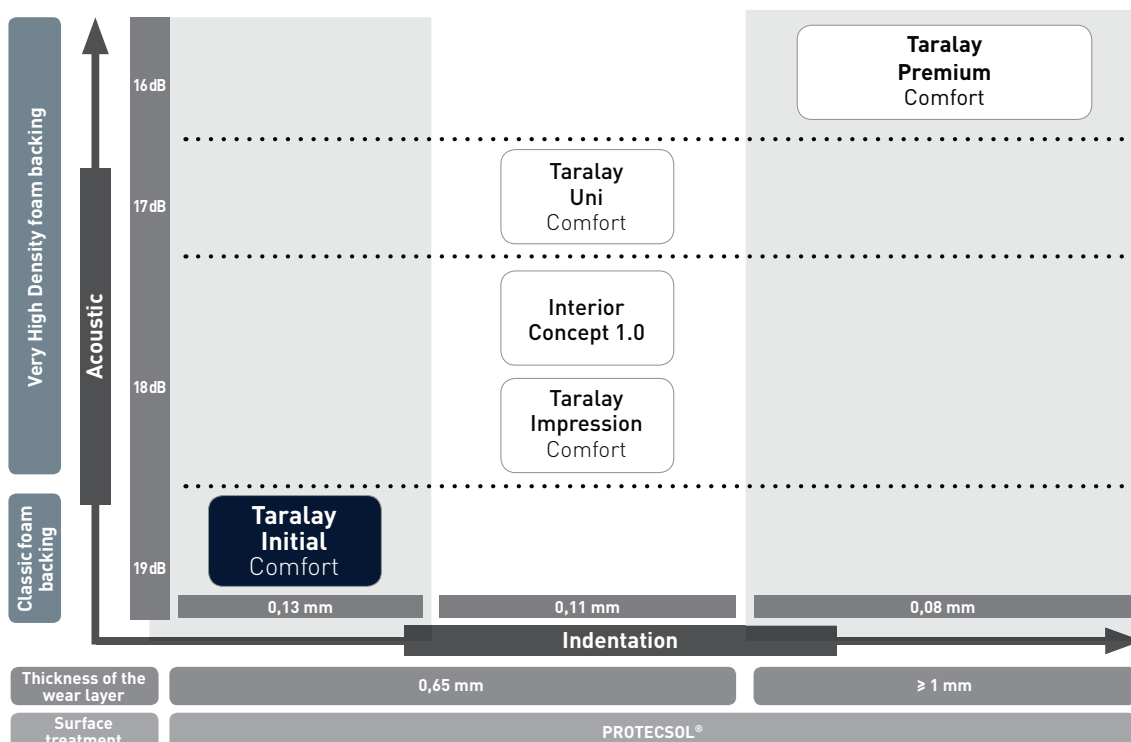
- This unique UV-cured polyurethane Protocolsol® surface treatment protects the floorcovering and eliminates the need for costly emulsion dressings throughout the life of the product.
- Reduction of maintenance cost by up to 50% compared to non treated flooring.
- The original no-polish-for-life solution.

### Fully hygienic product

Sanosol®

- A fungistatic and bacteriostatic treatment.
- Impervious to water.

## Comfort heterogeneous flooring





# TECHNICAL DATA SHEET

TARALAY INITIAL  
COMFORT

TARASTEPE

## DESCRIPTION / BESCHREIBUNG / DESCRIPTION / BESCHRIJVING / DESCRIPCIÓN / DESCRIÇÃO / DESCRIZIONE

Total thickness / <i>Gesamtdicke</i> / Epaisseur totale / <i>Totale dikte</i> / Espesor total / <i>Espessura total</i> / Spessore totale	EN 428	mm	3.80	3.85
	ASTM F386-02	inch	0.15	-
Wearlayer thickness / <i>Dicke Nutzschrift</i> / Epaisseur couche d'usure / <i>Dikte van de slijtlaag</i> / Espesor capa de uso / <i>Espessura camada de desgaste</i> / Spessore strato di usura	EN 429	mm	0.65	0.85
	ASTM F410-02	inch	0.026	-
Weight / <i>Flächengewicht</i> / Poids / <i>Gewicht</i> / Peso / <i>Peso</i> / Peso	EN 430	g/m <sup>2</sup>	2975	3340
Width/length of sheet / <i>Bahnenbreite/-länge</i> / Largeur/longueur des lés / <i>Rolbreedte/Rollengte</i> / Ancho/largo de rollos / <i>Largura/comprimento dos rolos</i> / Larghezza/lunghezza dei teli	EN 426	cm/lm	200 / 25	101 / 22
	-	feet - inch	6'6" / 82'	-
	-	m <sup>2</sup>	50	22
Coverage / roll	-	sq.ft	538.20	-

## CLASSIFICATION / KLASSIFIZIERUNG / CLASSIFICATION / CLASSIFICATIE / CLASIFICACIONES / CLASSIFICAÇÕES / CLASSIFICAZIONI

Norm/product specification / <i>Produkt Norm</i> / Norme produit / <i>Technische eigenschappen</i> / Normas / <i>Normas</i> / Norma prodotto	-	-	EN 651	EN 651
European classification / <i>Europäische Klassifizierung</i> / Classement européen / <i>Europese classificatie</i> / Europea / <i>Europeia</i> / Europea	EN 685	class	34-42	34-42
Reference specification	ASTM F1303-04	-	Type I - Grade 1	-
Fire rating / <i>Brandverhalten</i> / Classement feu / <i>Brand classificatie</i> / Fuego / <i>Fogo</i> / Reazione al fuoco	EN 13501-1	class	B <sub>fl</sub> - s1	C <sub>fl</sub> - s1
Fire rating	ASTM E648-08	class	Class I	-
	CAN/ULC S102.2	-	OK	-
Static electrical propensity / <i>Begehaufladung</i> / Potentiel de charge / <i>Elektrische eigenschappen</i> / Comportamiento electrostático / <i>Comportamento electrostático</i> / Resistenza elettrica	EN 1815	kV	< 2	< 2
Slip resistance wet: ramp test with oil / <i>Bestimmung der rutschhemmenden Eigenschaften - Schiefe Ebene</i> / Glissance humide / <i>Anti-slip</i> / Deslizamiento húmedo / <i>Escorregamento húmido</i> / Scivolosità umida	DIN 51 130 / BGR 181	class	R10	R10

## PERFORMANCE / TECHNISCHE EIGENSCHAFTEN / PERFORMANCES / TESTRESULTAAT / CUALIDADES TÉCNICAS / PERFORMANCES / CARATTERISTICHE TECNICHE

Wear resistance / <i>Verschleißverhalten</i> / Résistance à l'usure / <i>Slijtvastheid</i> / Abrasión / <i>Abrasão</i> / Resistenza all'abrasione	EN 660.2	mm <sup>3</sup>	≤ 2.0	≤ 2.0
Wear group / <i>Verschleißgruppe</i> / Groupe d'abrasion / <i>Groep slijtvastheid</i> / Grupo de abrasión / <i>Grupo de abrasão</i> / Gruppo di abrasione	EN 651	-	T	T
Dimensional stability / <i>Maßstabilität</i> / Stabilité dimensionnelle / <i>Maatvastheid</i> / Estabilidad dimensional / <i>Estabilidade dimensional</i> / Stabilità dimensionale	EN 434	%	≤ 0.40	≤ 0.40
Residual indentation (exigency) / <i>Resteindruck</i> (Spezifikation) / Poinçonnement (exigence) / <i>Indrukbelasting (vereist)</i> / Punzonamiento (exigencia) / <i>Punçoamento (exigência)</i> / Impronta (esigenza)	EN 433	mm	≤ 0.20	≤ 0.20
Residual indentation (measure) / <i>Resteindruck</i> (Messwert) / Poinçonnement (mesuré) / <i>Indrukbelasting (meting)</i> / Punzonamiento (valor) / <i>Punçoamento (valor)</i> / Impronta (misura)	-	mm	0.13	0.13
Impact sound insulation / <i>Trittschallverbesserungsmaß</i> / Isolation acoustique / <i>Geluidsisolatie</i> / Acústica / <i>Acústica</i> / Isolamento acustico	EN ISO 717-2	dB	19	18
Thermal conductivity / <i>Wärmeleitfähigkeit</i> / Conductivité thermique / <i>Thermische weerstand</i> / Resistencia térmica / <i>Resistência térmica</i> / Resistenza termica	EN 12 524	W/(m.K)	0.25	0.25
Colour fastness / <i>Lichtechtheit</i> / Solidité lumière / <i>Lichtechtheid</i> / Resistencia a la luz / <i>Estabilidade das cores</i> / Solidità alla luce	EN 20 105 B02	degree	≥ 6	≥ 6
Chemical products resistance / <i>Verhalten gegenüber Chemikalien</i> / Résistance aux produits chimiques / <i>Chemische bestendigheid</i> / Resistencia a los productos químicos / <i>Resistência aos produtos químicos</i> / Resistenza ai prodotti chimici	EN 423	class	OK <i>beständig gegenüber nicht färbenden alkoholhaltigen Handdesinfektionsmitteln, Haushaltschemikalien und verdünnten Säuren und Laugen bei kurzzeitiger Einwirkung.</i>	OK <i>beständig gegenüber nicht färbenden alkoholhaltigen Handdesinfektionsmitteln, Haushaltschemikalien und verdünnten Säuren und Laugen bei kurzzeitiger Einwirkung.</i>
Bacteriostatic and fungistatic treatment / <i>Fungistatisch und bakteriostatisch</i> / Fongistatique et bactériostatique / <i>Bacteriologisch en schimmelwerend</i> / Bacteriostático y fungistático / <i>Bacteriostático e fungistático</i> / Batteriostatico e micostatico	-	-	Sanosol®	Sanosol®
Surface treatment / <i>Oberflächenvergütung</i> / Traitement de surface / <i>Oppervlaktebehandeling</i> / Tratamiento de superficie / <i>Tratamento de superficie</i> / Trattamento di superficie	-	-	Protecsol®	-
TVOC after 28 days / <i>TVOC (28 Tage)</i> / TVOC (28 jours) / <i>TVOC (28 dagen)</i> / TVOC (28 dias) / <i>TVOC (28 dias)</i> / TVOC (28 giorni)	ISO 16000-6	µg/m <sup>3</sup>	< 100	< 100

## CE MARKING / CE KENNZEICHNUNG / MARQUAGE CE / EG-CONFORMITEITSMERK / MARCA DE CONFORMIDAD CE / MARCA DE CONFORMIDADE CE / MARCATURA CE DI CONFORMITA

CE	EN 14041	-	
		-	




SAMPLING SERVICE: call Gerflor to request your samples!

# TARALAY INITIAL

## TARASTEP

Complete steps with contrasting stair noses for a better visibility\*

	18 dB	Sanosol®	 100 % recyclable
---	-------	----------	--



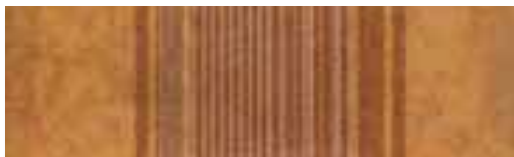
0470 Chanvre

WR: 0585 0318



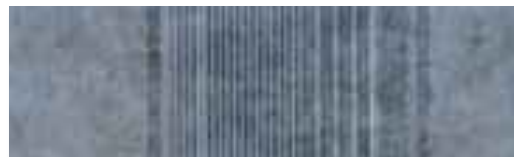
0466 Mastic

WR: 0585 0580



0471 Ocre

WR: 0585 0832



0465 Ciment

WR: 0585 2211



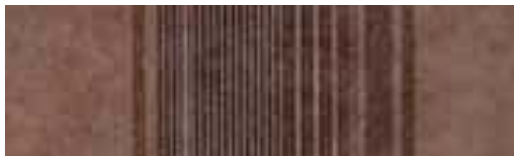
0463 Safran

WR: 0585 2154



0461 Bleu Acier

WR: 0585 2212



0469 Camel

WR: 0585 2229

CR : cordon de soudure -  
code référence 0585 + [CR] Code

### Tactile strip\*

Tactile strips with pads to create visual and tactile contrast with the floor



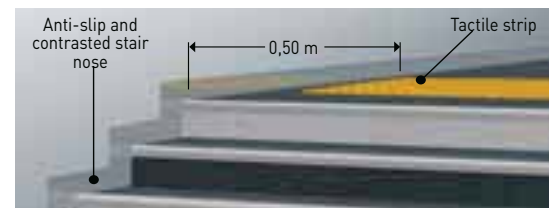
0005 Yellow



0007 Light Grey



0009 Dark Grey



### Floor marking\*



\*Complete Gerflor offer to meet the needs of all users including those with mobility issues and visual impairments