

DECOWOOD STARLINE

DECOTREND STARLINE

**Bactericidal joint**



## ▶ ALUMINIUM HANDRAILS WITH WOOD OR TREND EFFECT BAND

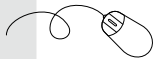
### Applications

The Decowood or Decotrend Starline provide both a good grip and a stylish decorative touch with their wood or trend effect band. They are ideally suited for straight and curved corridor areas with light traffic of trolleys in public buildings: hospitals, clinics, retirement homes, hotels, offices. Starline can be bent for curved sections. A removeable system is available to provide continuation of the handrail in front of service ducts. They are fitted with bactericidal joints.

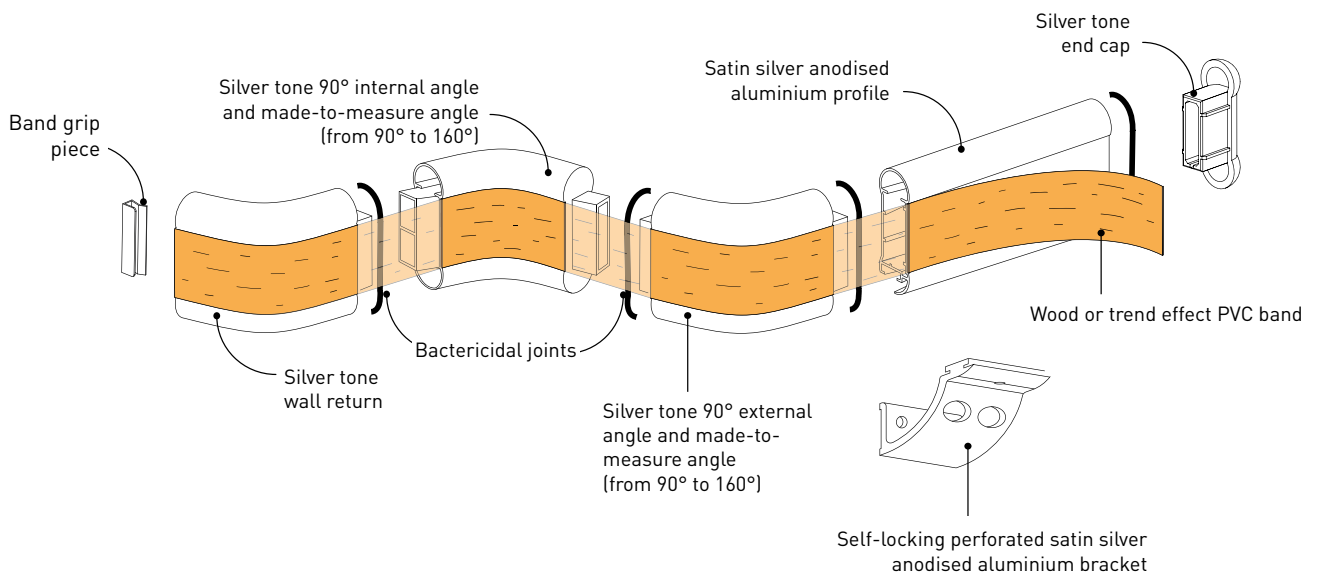
### Specification

- Description: Anodised aluminium handrail with a wood or trend effect band (Decowood or Decotrend Starline as manufactured by Gerflor). The profile is satin silver anodised aluminium with a groove into which the 40 mm high satin silver anodised aluminium curved brackets slide and lock. Accessories (wall returns, 90° internal and external angle pieces or made-to-measure from 90° to 160°) made of antibacterial smooth silver tone PVC are fitted into the profile. A self-adhesive wood or trend effect PVC band is bonded to the rail assembly. The depth of the handrail is 90 mm, it has an overall projection of 80 mm and a thickness of 30 mm. Bactericidal joints are provided for the junctions between profile sections and accessories. The profile can be curved.

- Environment: No heavy metals and no substance potentially subjected to any REACH restriction are used in its manufacture, nor PBT/PBA. The calcium-zinc thermal stabilisation process is used. The emission level of volatile substance in inside air has been tested according to ISO 16000-6 and is very low (A+) according to the french regulation (23 march 2011 nr 2011-321 Decree and 19 April 2011 Order). 100% of the product are recyclable.
- Colour: Selected by architects from manufacturer's standard range.
- Installation sequence: Upper edge of section 0.90 m max. above floor level. Fixes to self-locking 2-point perforated brackets screwed to the wall at 1.20 m centres (0.80 m centres in heavy traffic corridors and on light partitions like plasterboard). Wall returns fixing with pop rivets.



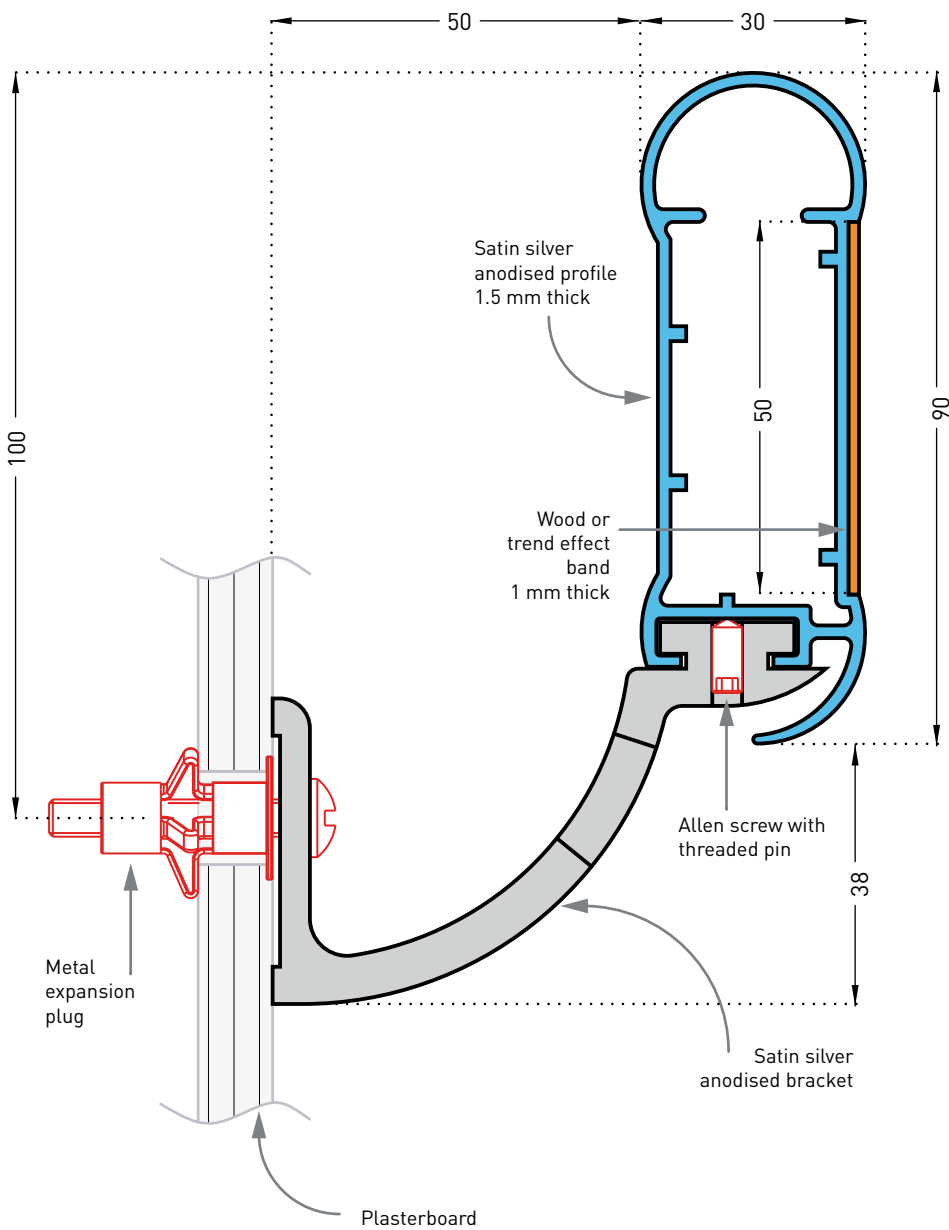
Specification and technical drawings can be downloaded from our website [www.gerflor.com](http://www.gerflor.com)



Decowood Starline band  
7 wood effect decors



Decotrend Starline band  
4 trend effect decors



**Description**

- Model: Starline Decowood or Decotrend anodised aluminium handrail with wood or trend effect PVC band
- Section depth: 90 mm
- Length: 4 m
- Thickness: 30 mm
- Overall projection: 80 mm
- Stand-off from wall: 50 mm
- Material: Satin silver anodised aluminium profile with wood or trend effect PVC band achieving Bs2d0 fire rating and bactericidal joints
- Fixing components: 2-point self-locking perforated satin silver anodised aluminium brackets, screwed to wall at 1.20 m centres (0.80 m centres in heavy traffic corridors and on light partitions like plasterboard)
- Colours: 7 wood effect and 4 trend effect for the band